



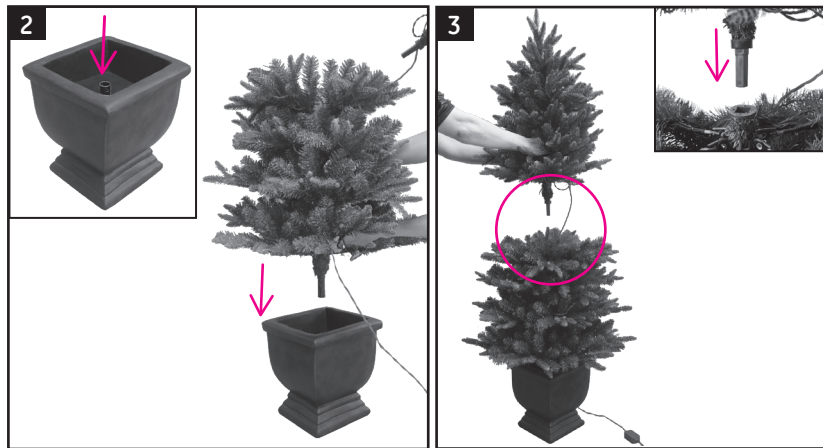
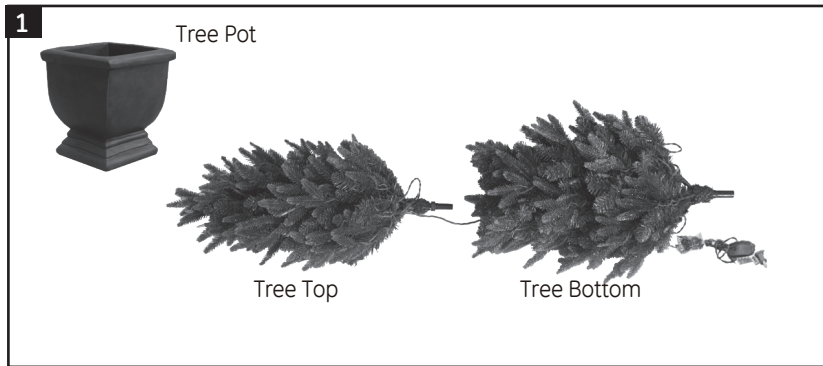
IMPORTANT, RETAIN FOR FUTURE REFERENCE: READ CAREFULLY

ITM. / ART. 1456761
ITM. / ART. 587923
ITM. / ART. 601054

1.3 m / 4.5 ft Porch Tree Assembly Instructions

- WARNING: Risk of fire and electric shock. Disconnect light set from power before starting.
- 1) Keep wires clear of being pinched or cut during assembly or installation.
 - 2) Do not press or grasp bulbs during assembly or installation.
 - 3) Please read all instructions and warnings included with this product before using.

Parts List: (1) Tree Top (1) Tree Bottom (1) Tree Pot (1) Spare Parts Bag



Assembly Steps

- 1) Remove contents from the carton and carefully remove all packing material. **{Fig. 1}**
Retain the box to repack your tree.
- 2) Locate the bottom section of your tree. Insert the bottom section of the tree into the pot as shown in **{Fig. 2}**.
- 3) Locate the top section of your tree. To shape this section, start at the bottom and unfold each branch arranging them for the desired shape. Once shaped as desired place the square post of the top pole into the square opening at the top of the bottom pole and insert into the top of the bottom section **{Fig. 3}**.

NOTE: Reattach any loose bulbs by fully inserting into an open lamp socket.

- 4) To illuminate, undo the lead wire and fully insert the plug into an approved working wall outlet. **{Fig. 4}**.

Notes: All bulbs should be lighted. If any bulb does not light, check bulb for security in lamp holder. Replacement bulbs provided. See separate instructions for replacing bulbs (enclosed).

Trouble Shooting Tips

If one section of your tree does not illuminate, check that section for loose or missing bulbs or that all electrical connections on tree are made. Also, check and make certain the wall switch is turned on.

Tree Storage

When your tree is not in use, be sure to store it neatly in a cool, dry location protected from sunlight.

For customer service

call: 1-866-489-0019

Holiday Season: Nov 11 to Dec 23:

Monday–Friday: 8:00 AM - 8:00 PM,

Saturday and Sunday: 10:00 AM - 7:00 PM

EST, Off Season: Dec 26 to

Nov 10: Monday–Friday:

10:00 AM - 7:00 PM EST

or visit us on the web at

www.geholidaylighting.com

(in English only for US and Canada)

For Interior / Exterior Undercover

©2017 Nicolas Holiday Inc.,

9 F., No. 37, Guangfu North Rd.

Taipei, Taiwan 10560

All rights reserved.

THIS IS NOT A TOY, FOR DECORATIVE USE ONLY.

Printed in China / Made in China

Distributed by:
Costco Wholesale Corporation
P.O. Box 34535
Seattle, WA 98124-1535
USA
1-800-774-2678
www.costco.com

Imported by / Importé par :
Costco Wholesale Canada Ltd.*
415 W. Hunt Club Road
Ottawa, Ontario
K2E 1C5, Canada
1-800-463-3783
www.costco.ca
* faisant affaire au Québec sous le nom
Les Entrepôts Costco