



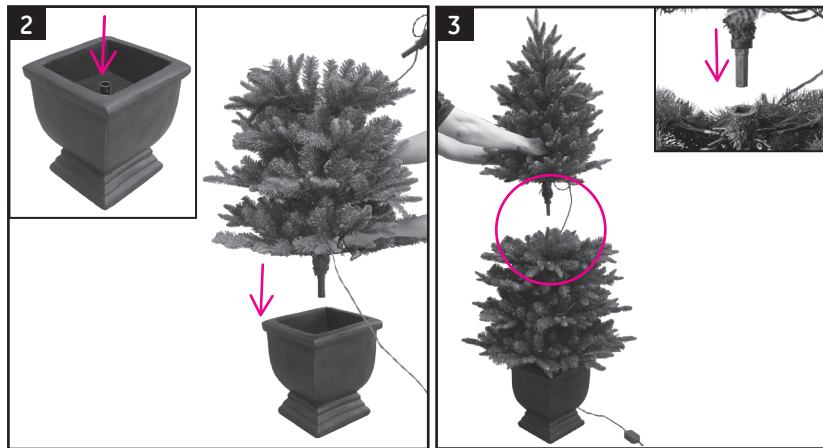
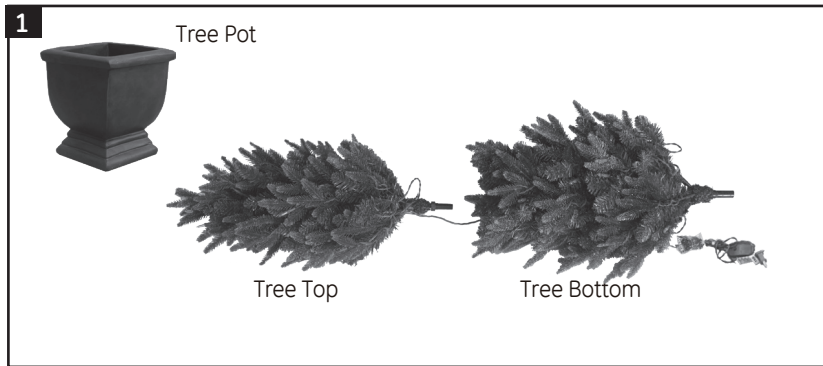
**IMPORTANT, RETAIN FOR FUTURE REFERENCE:  
READ CAREFULLY**

ITM. / ART. 1900213

**1.3 m / 4.5 ft Porch Tree Assembly Instructions**

- WARNING: Risk of fire and electric shock. Disconnect light set from power before starting.
- 1) Keep wires clear of being pinched or cut during assembly or installation.
  - 2) Do not press or grasp bulbs during assembly or installation.
  - 3) Please read all instructions and warnings included with this product before using.

Parts List: (1) Tree Top (1) Tree Bottom (1) Tree Pot (1) Spare Parts Bag



**Assembly Steps**

- 1) Remove contents from the carton and carefully remove all packing material. **{Fig. 1}**  
Retain the box to repack your tree.
  - 2) Locate the bottom section of your tree. Insert the bottom section of the tree into the pot as shown in **{Fig. 2}**.
  - 3) Locate the top section of your tree. To shape this section, start at the bottom and unfold each branch arranging them for the desired shape. Once shaped as desired, insert the top section of the tree into the bottom section of the tree. **{Fig. 3}**.
- NOTE:** Reattach any loose bulbs by fully inserting into an open lamp socket.
- 4) To illuminate, undo the lead wire and fully insert the plug into an approved working wall outlet. **{Fig. 4}**.

**Notes:** All bulbs should be lighted. If any bulb does not light, check bulb for security in lamp holder. Replacement bulbs provided. See separate instructions for replacing bulbs (enclosed).

**Trouble Shooting Tips**

If one section of your tree does not illuminate, check that section for loose or missing bulbs or that all electrical connections on tree are made. Also, check and make certain the wall switch is turned on.

**Tree Storage**

When your tree is not in use, be sure to store it neatly in a cool, dry location protected from sunlight.

**This is not a toy. For decorative indoor use, or outdoor under cover.**

**For customer service call (in English only):  
1-866-489-0019**

**OPERATING HOURS:**

January 2 - November 9 :  
Monday to Friday, 10 AM - 7 PM EST,  
November 10 - December 23:  
Monday to Friday, 8 AM - 8 PM EST,  
Saturday & Sunday, 10 AM-7 PM EST  
December 24 - 29: 10 AM - 7 PM EST  
See complete schedule at [www.geholidaylighting.com](http://www.geholidaylighting.com)

**For Interior / Exterior Undercover**

©2018 Nicolas Holiday Inc.,  
9 F., No. 37, Guangfu North Rd.  
Taipei, Taiwan 10560  
All rights reserved.

Printed in China / Made in China

Imported by / Importé par :  
Costco Wholesale Canada Ltd.\*  
415 W. Hunt Club Road  
Ottawa, Ontario  
K2E 1C5, Canada  
1-800-463-3783  
[www.costco.ca](http://www.costco.ca)

\* faisant affaire au Québec sous le nom  
Les Entrepôts Costco

Distributed by:  
Costco Wholesale Corporation  
P.O. Box 34535  
Seattle, WA 98124-1535  
USA  
1-800-774-2678  
[www.costco.com](http://www.costco.com)